



MIANUS CHAPTER TROUT
UNLIMITED

COMSTOCK BROOK RESTORATION
390 RIDGEFIELD ROAD
WILTON
FAIRFIELD COUNTY, CONNECTICUT

**STERNHEIM - GARDNER DAM
REMOVAL DESIGN**
March 22, 2021

Prepared For:
Mianus Chapter of Trout Unlimited
PO Box 475
Wilton, Connecticut 06897

Prepared By:
Trout Scapes River Restoration LLC
280 W. Kagy Boulevard, Suite D #310
Bozeman, MT 59715

SHEET 1 of 8	COVER SHEET
SHEET 2 of 8	LOCATION MAP
SHEET 3 of 8	DAM REMOVAL ACCESS & MATERIAL STAGING MAP
SHEET 4 of 8	DAM REMOVAL PLAN VIEW
SHEET 5 of 8	DAM REMOVAL CROSS-SECTIONS A & B
SHEET 6 of 8	DAM REMOVAL CROSS-SECTION C
SHEET 7 of 14	CROSS-VANE DESIGN FIGURES
SHEET 8 of 14	ROOTWAD REVETMENT DESIGN FIGURES



280 West Kagy Blvd
Suite D #310
Bozeman, MT 59715
(406) 209-1357

www.troutscapes.com

3/22/21	Restoration Design Draft

**TROUT UNLIMITED
COMSTOCK BROOK
RESTORATION**

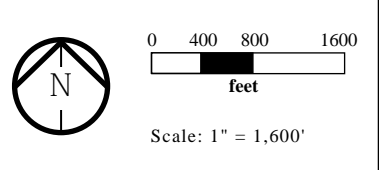
**STERNHEIM-GARDNER
DAM REMOVAL
CONCEPTUAL DESIGN**

**390 RIDGEFIELD ROAD
WILTON, CONNECTICUT**

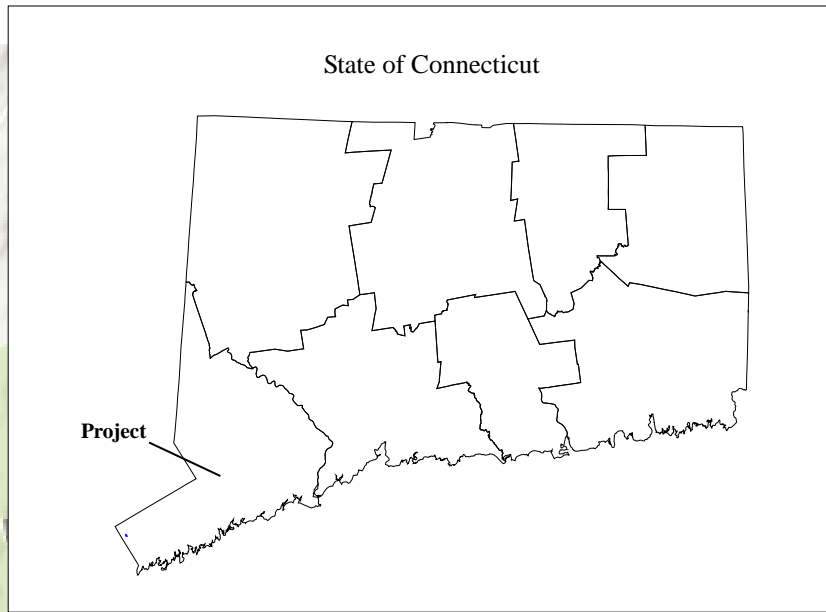
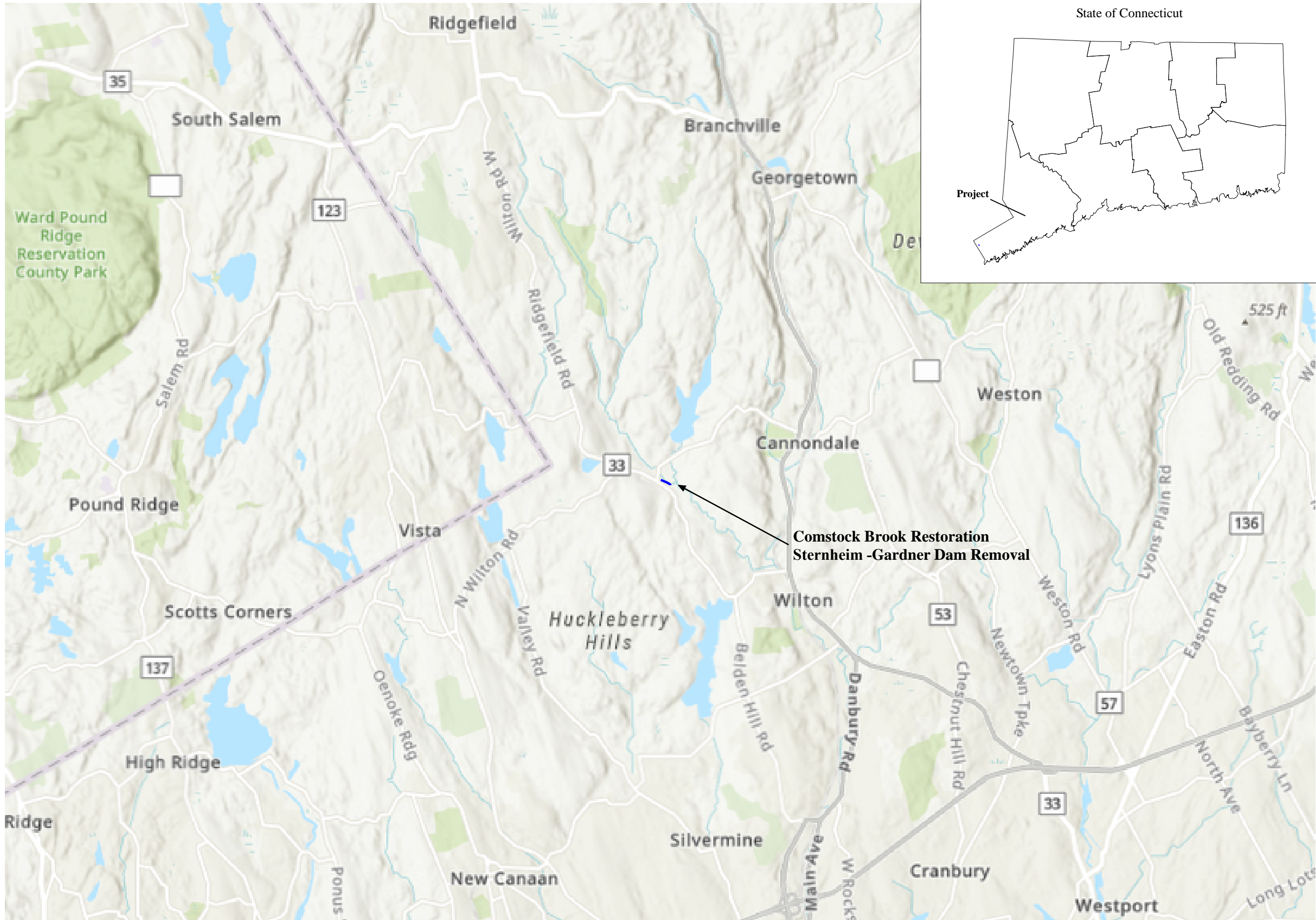
COMSTOCK BROOK

COVER SHEET

NOTES



Drawn By: EW Checked By:



280 West Kagy Blvd
Suite D #310
Bozeman, MT 59715
(406) 209-1357

www.troutscapes.com

3/22/21	Restoration Design Draft

**TROUT UNLIMITED
COMSTOCK BROOK
RESTORATION**

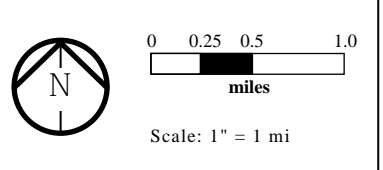
**STERNHEIM-GARDNER
DAM REMOVAL
CONCEPTUAL DESIGN**

**390 RIDGEFIELD ROAD
WILTON, CONNECTICUT**

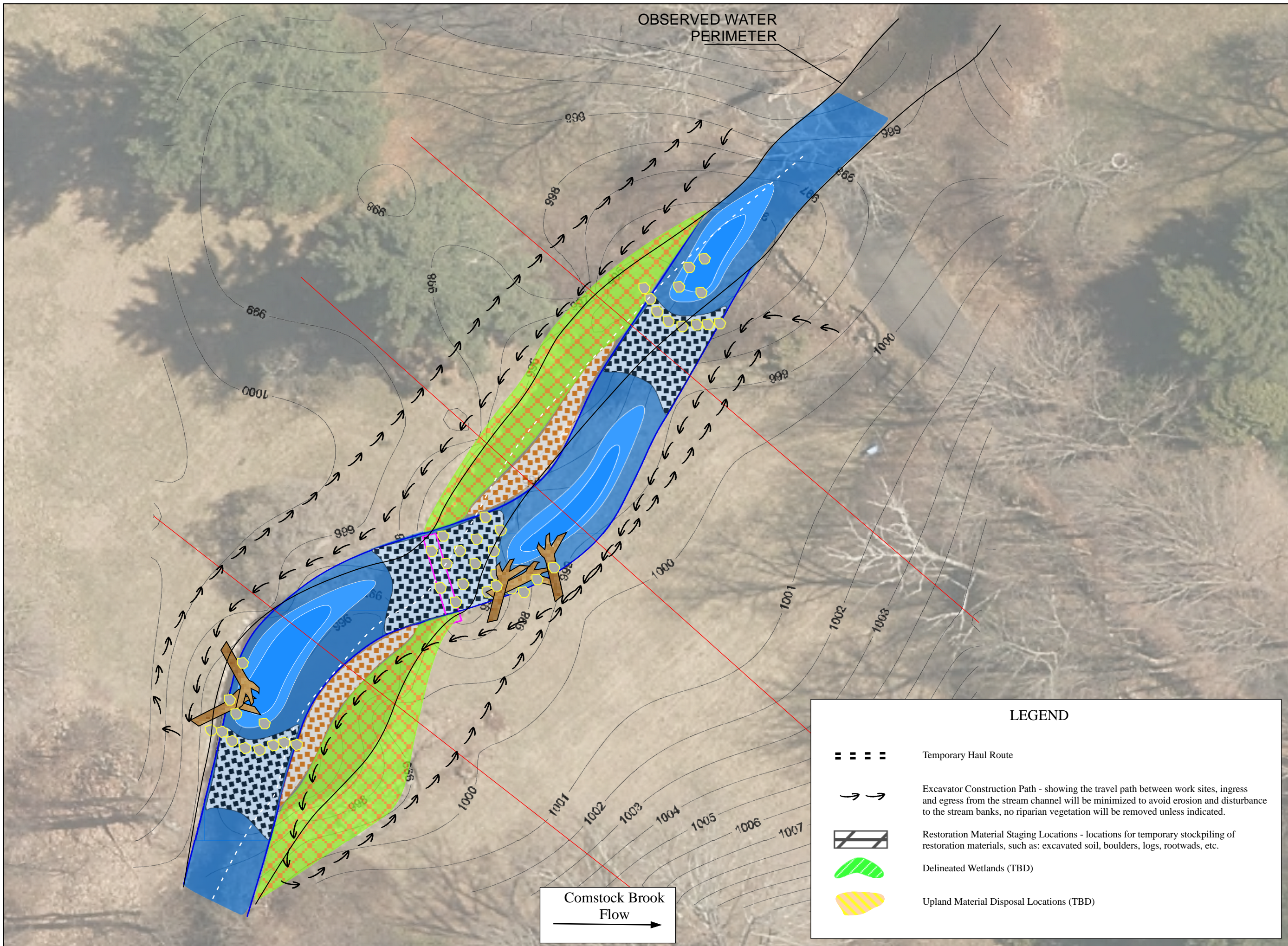
COMSTOCK BROOK

LOCATION MAP

NOTES



Drawn By: EW Checked By:



OBSERVED WATER PERIMETER

Comstock Brook Flow

LEGEND

- Temporary Haul Route
- Excavator Construction Path - showing the travel path between work sites, ingress and egress from the stream channel will be minimized to avoid erosion and disturbance to the stream banks, no riparian vegetation will be removed unless indicated.
- Restoration Material Staging Locations - locations for temporary stockpiling of restoration materials, such as: excavated soil, boulders, logs, rootwads, etc.
- Delineated Wetlands (TBD)
- Upland Material Disposal Locations (TBD)

TROUT SCAPES
RIVER RESTORATION LLC

280 West Kagy Blvd
Suite D #310
Bozeman, MT 59715
(406) 209-1357

www.troutscapes.com

3/22/21	Restoration Design Draft

TROUT UNLIMITED
COMSTOCK BROOK
RESTORATION

STERNHEIM-GARDNER
DAM REMOVAL
CONCEPTUAL DESIGN

390 RIDGEFIELD ROAD
WILTON, CONNECTICUT

COMSTOCK BROOK

DAM
REMOVAL ACCESS
& MATERIAL
STAGING MAP

NOTES

0 5 10 20
miles

Scale: 1" = 20'

Drawn By: EW Checked By:

TROUT SCAPES
RIVER RESTORATION LLC



280 West Kagy Blvd
Suite D #310
Bozeman, MT 59715
(406) 209-1357
www.troutscapes.com

3/22/21	Restoration Design Draft

TROUT UNLIMITED
COMSTOCK BROOK
RESTORATION

STERNHEIM-GARDNER
DAM REMOVAL
CONCEPTUAL DESIGN

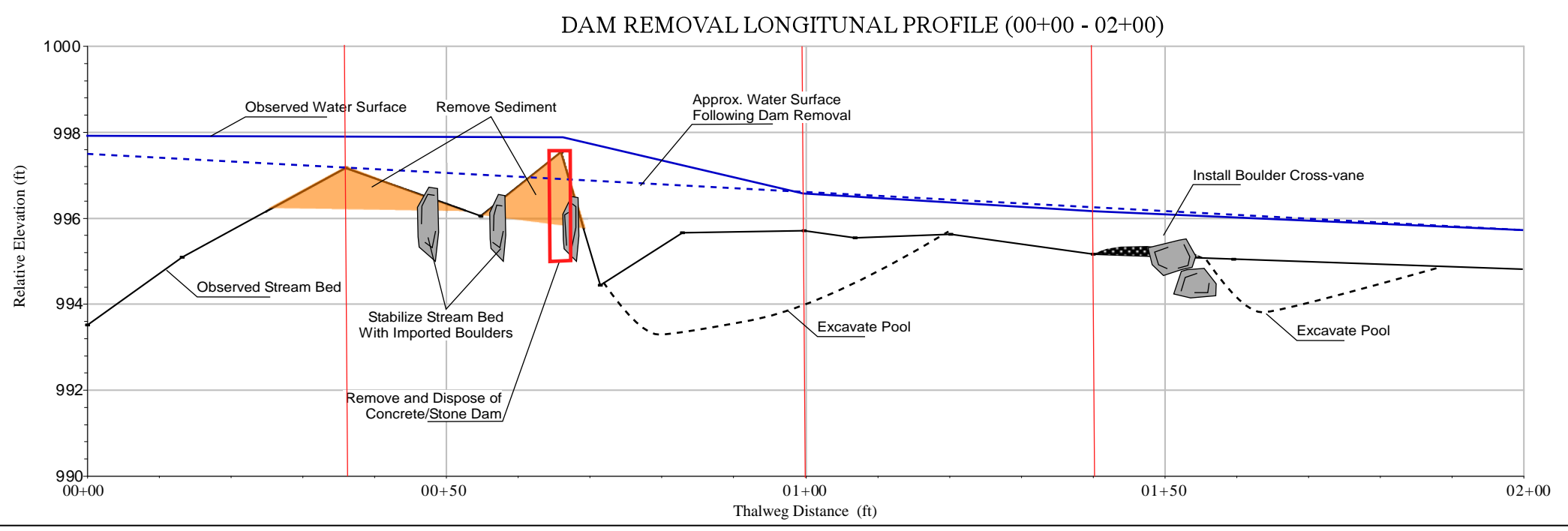
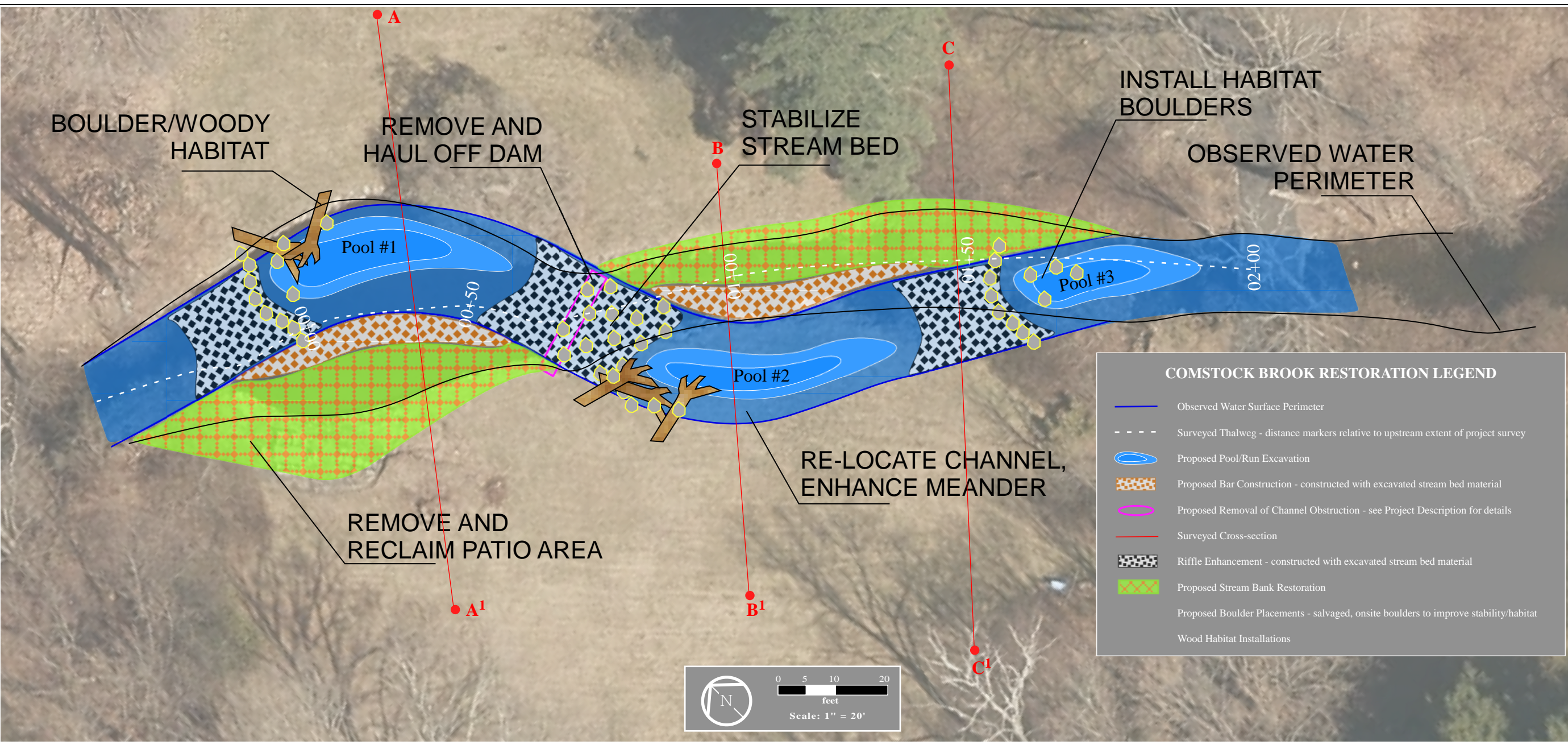
390 RIDGEFIELD ROAD
WILTON, CONNECTICUT

COMSTOCK BROOK

DAM REMOVAL
PLAN VIEW

NOTES

Drawn By: EW Checked By:





280 West Kagy Blvd
Suite D #310
Bozeman, MT 59715
(406) 209-1357

www.troutscapes.com

3/22/21	Restoration Design Draft

**TROUT UNLIMITED
COMSTOCK BROOK
RESTORATION**

**STERNHEIM-GARDNER
DAM REMOVAL
CONCEPTUAL DESIGN**

**390 RIDGEFIELD ROAD
WILTON, CONNECTICUT**

COMSTOCK BROOK

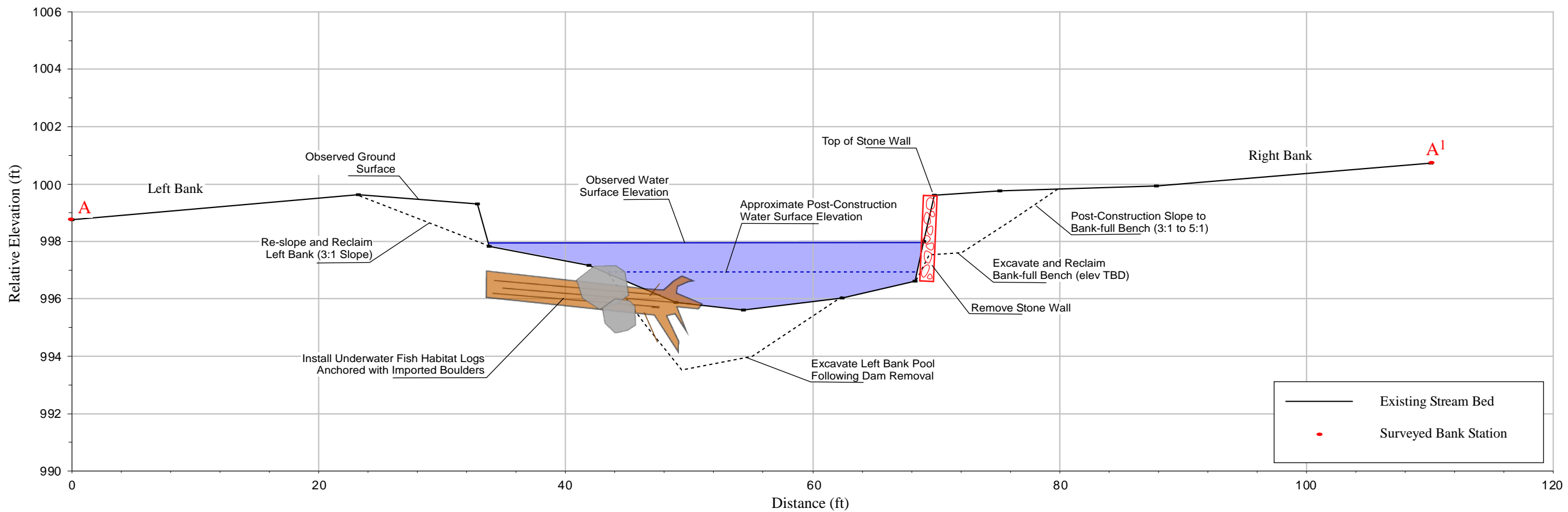
**DAM REMOVAL
CROSS-SECTIONS
A & B**

NOTES

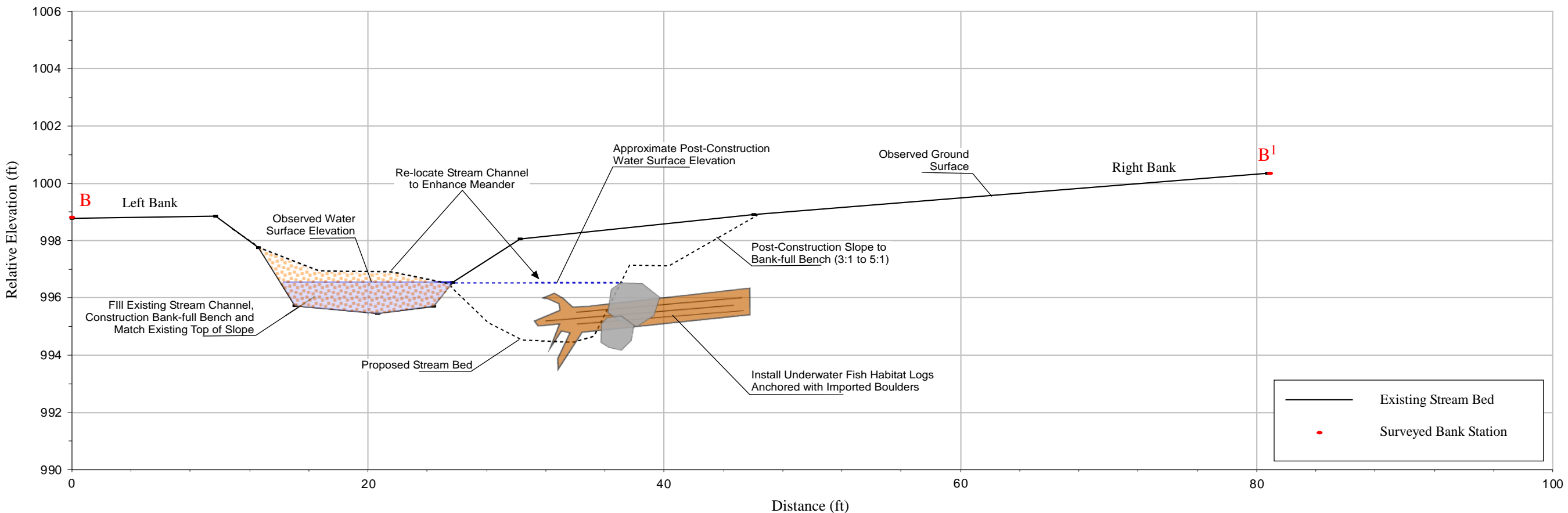
Drawn By: EW Checked By:

SHEET: **5 of 8**

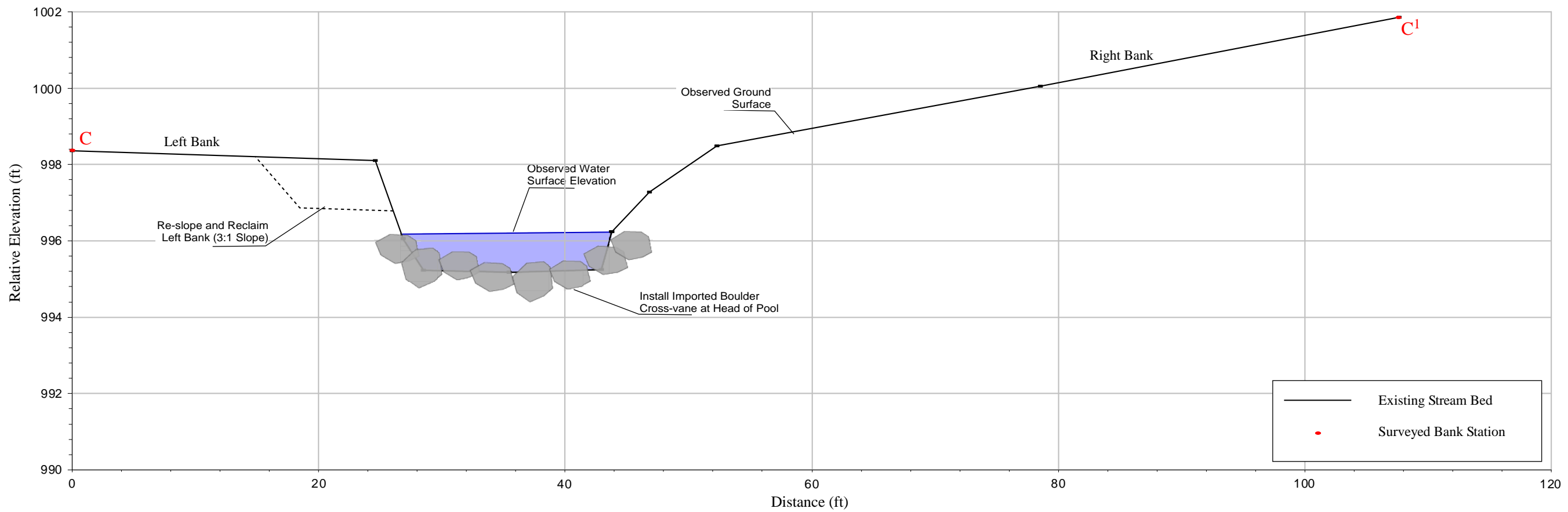
Cross-section A-A¹ (00+36): Pool 1



Cross-section B-B¹ (01+00): Pool 2



Cross-section C-C¹ (01+40): Riffle Upstream Pool 3



TROUT SCAPES
RIVER RESTORATION LLC

280 West Kagy Blvd
Suite D #310
Bozeman, MT 59715
(406) 209-1357
www.troutscapes.com

3/22/21	Restoration Design Draft

**TROUT UNLIMITED
COMSTOCK BROOK
RESTORATION**

**STERNHEIM-GARDNER
DAM REMOVAL
CONCEPTUAL DESIGN**

**390 RIDGEFIELD ROAD
WILTON, CONNECTICUT**

COMSTOCK BROOK

**DAM REMOVAL
CROSS-SECTION
C**

NOTES

Drawn By: EW Checked By:



TROUT SCAPES
RIVER RESTORATION LLC

280 West Kagy Blvd
Suite D #310
Bozeman, MT 59715
(406) 209-1357

www.troutscapes.com

3/22/21	Restoration Design Draft

**TROUT UNLIMITED
COMSTOCK BROOK
RESTORATION**

**STERNHEIM-GARDNER
DAM REMOVAL
CONCEPTUAL DESIGN**

**390 RIDGEFIELD ROAD
WILTON, CONNECTICUT**

COMSTOCK BROOK

**CROSS-VANE
DESIGN FIGURES**

NOTES

Drawn By: EW Checked By:

Figure 1. Typical Cross-vane
Plan View

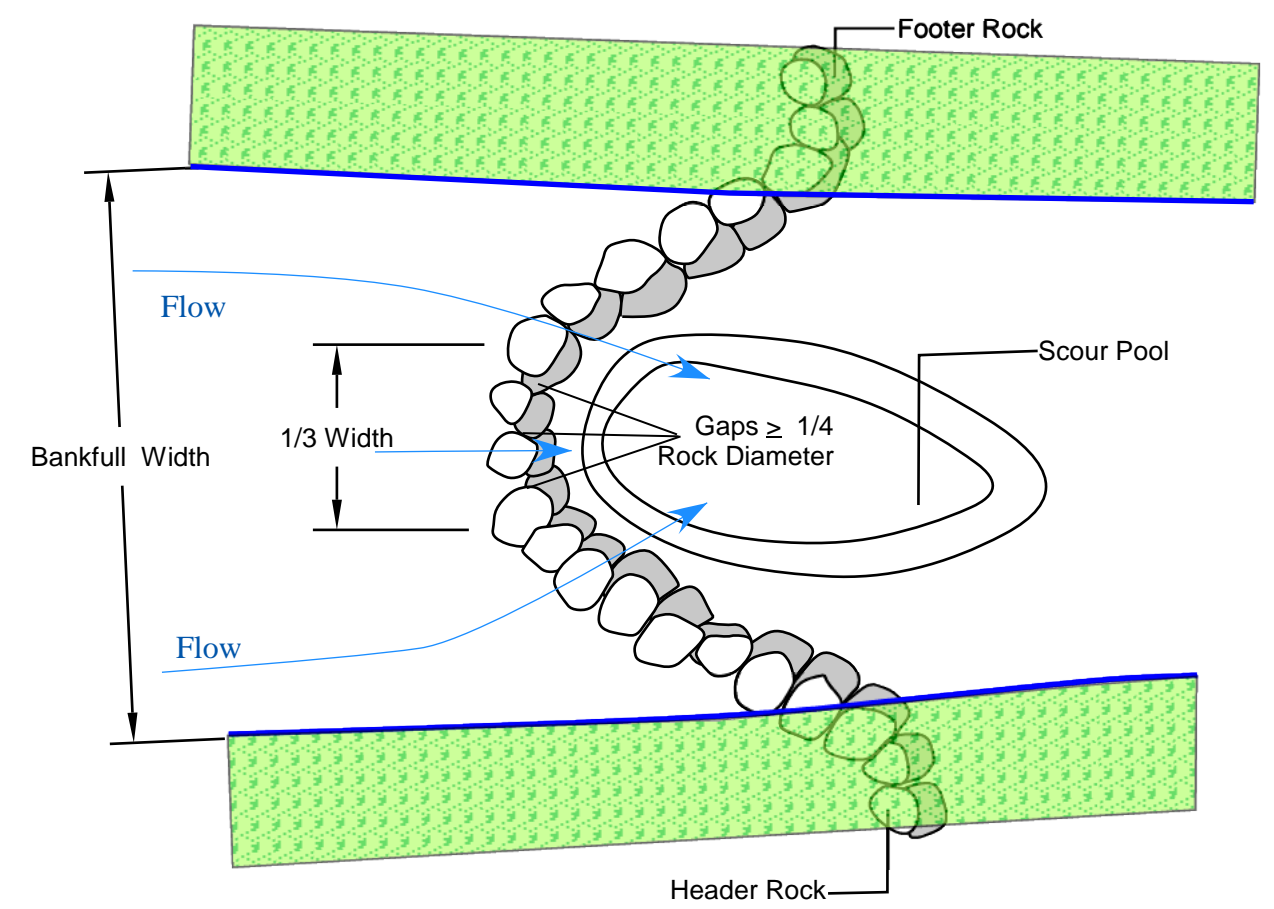


Figure 2. Typical Cross-vane
Cross-section View

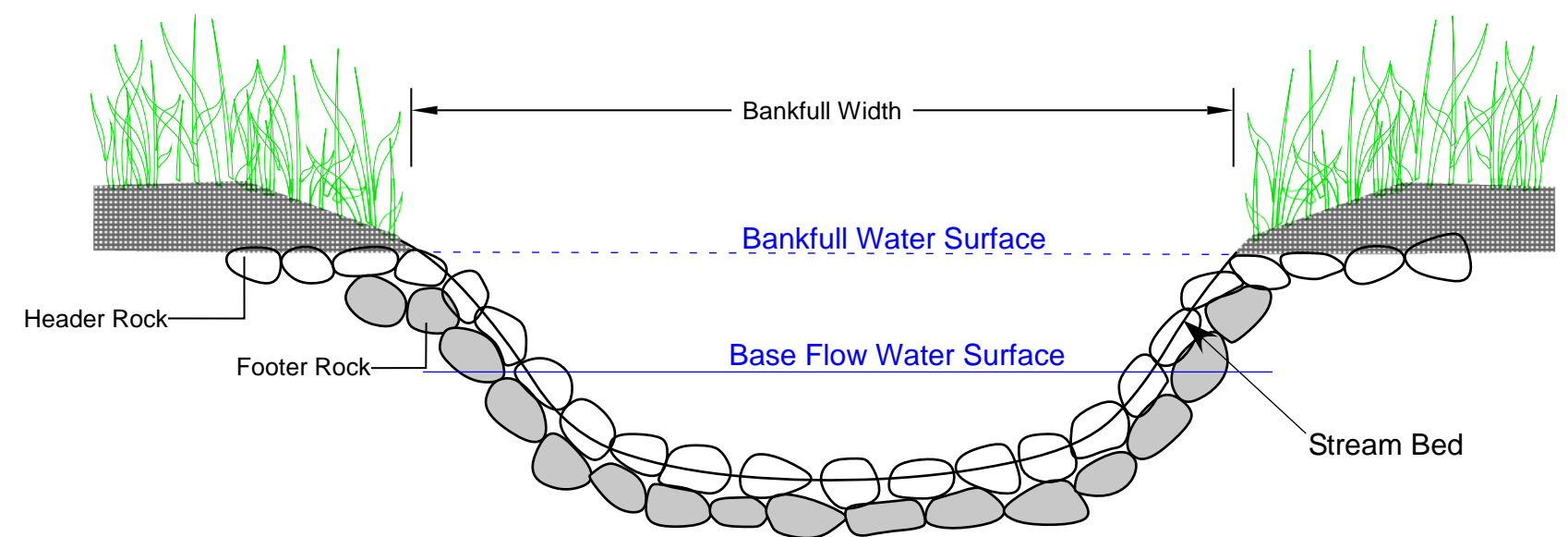


Figure 3. Typical Rootwad Revetment
Plan View

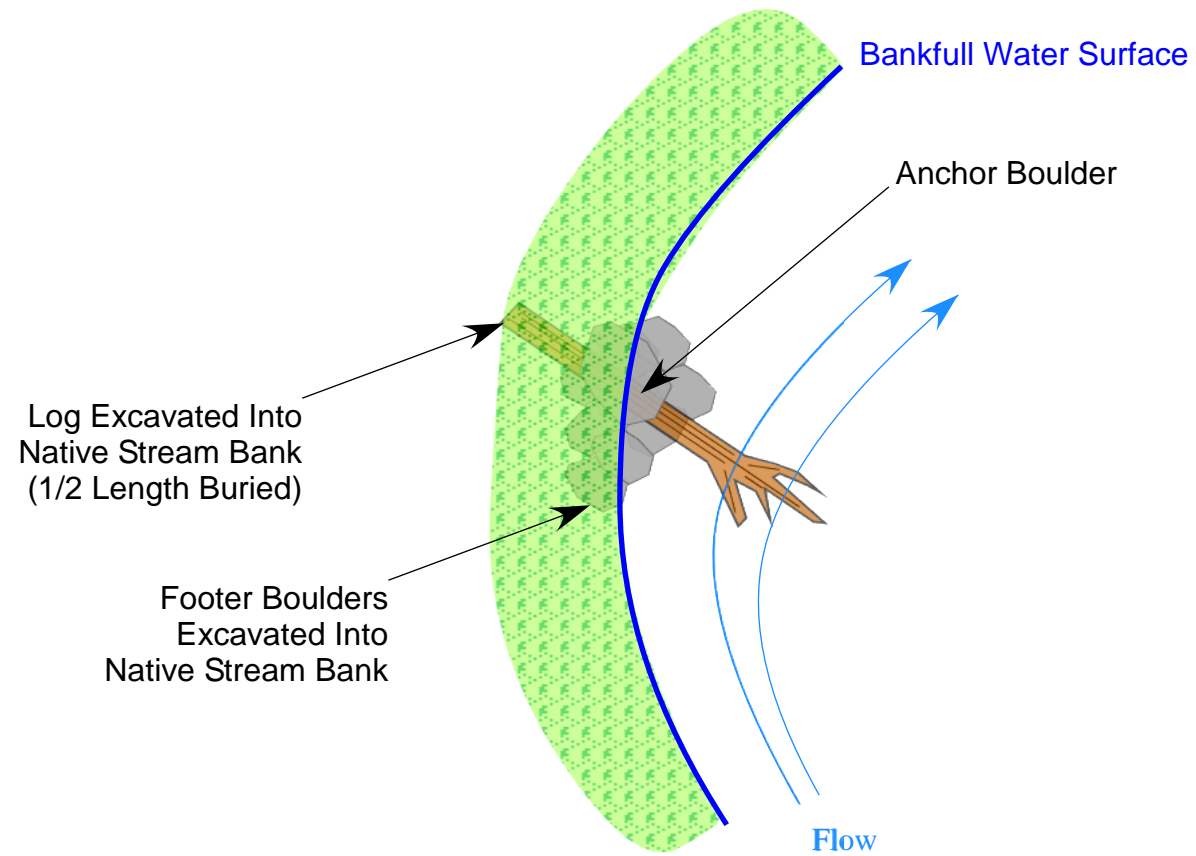
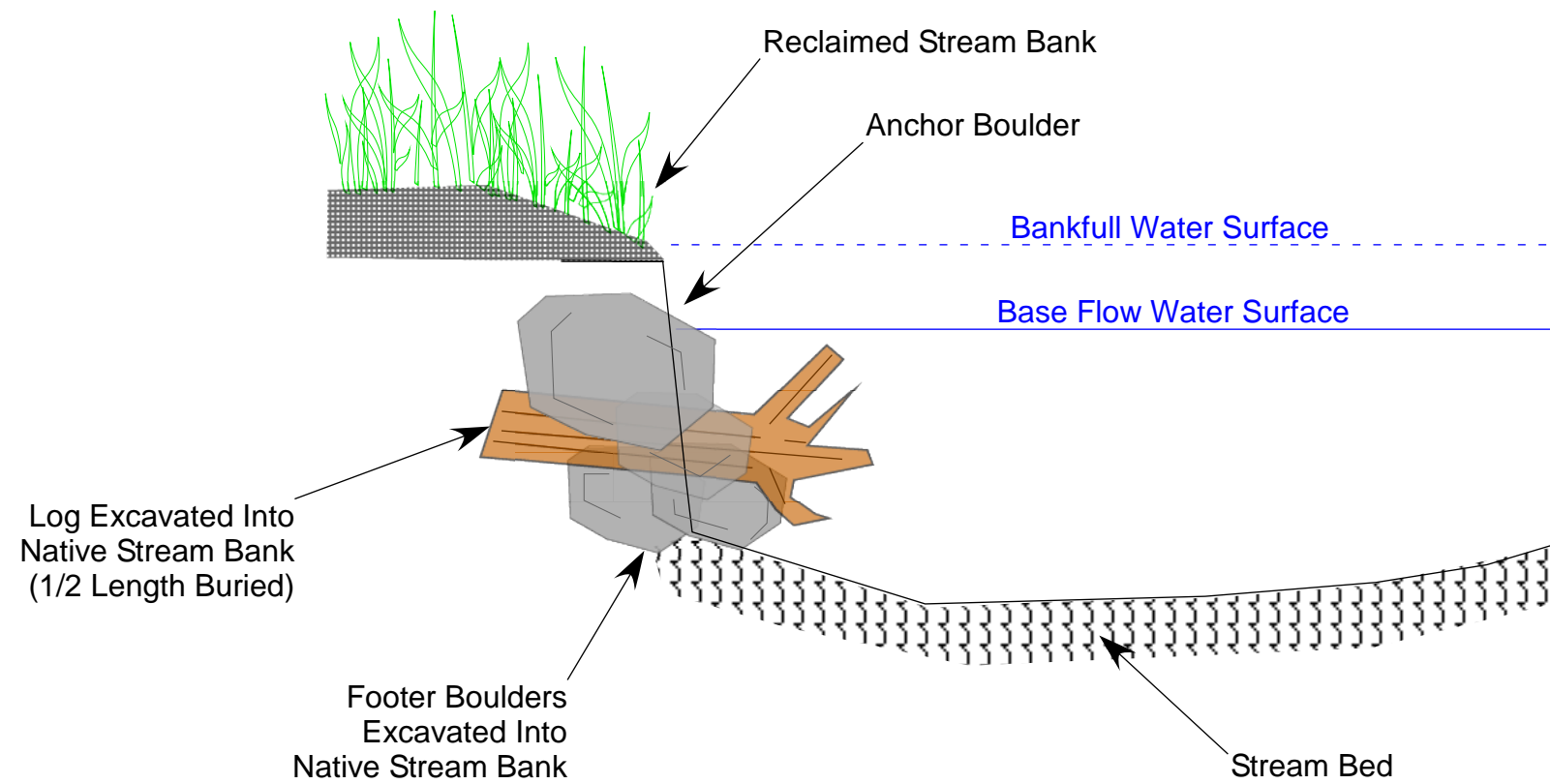


Figure 4. Typical Rootwad Revetment
Cross-section View



TROUT SCAPES
RIVER RESTORATION LLC

280 West Kagy Blvd
Suite D #310
Bozeman, MT 59715
(406) 209-1357

www.troutscapes.com

3/22/21	Restoration Design Draft

TROUT UNLIMITED
COMSTOCK BROOK
RESTORATION

STERNHEIM-GARDNER
DAM REMOVAL
CONCEPTUAL DESIGN

390 RIDGEFIELD ROAD
WILTON, CONNECTICUT

COMSTOCK BROOK

ROOTWAD
REVTMENT
DESIGN FIGURES

NOTES

Drawn By: EW Checked By: